

MERGE

**COVID-19 Symptom
Checker Logical Diagram**

COVID-19 SYMPTOM CHECKER – RISK GROUPS

1

No Symptoms

Defined as a user who does not indicate a potential complication factor (heart disease, HIV, COPD, etc.) and does not indicate any COVID-19 symptoms or life-threatening indicators.

2

No Symptoms / High Risk

Defined as a user who **has** indicated a potential complication factor (heart disease, HIV, COPD, etc.), but does **not** indicate any COVID-19 symptoms or life-threatening indicators.

3

C-19 Symptoms

Defined as a user who does **not** indicate a potential complication factor (heart disease, HIV, COPD, etc.), but **has** indicated one or more COVID-19 symptoms, but has **not** indicated a life-threatening indicator.

4

C-19 Symptoms / High Risk

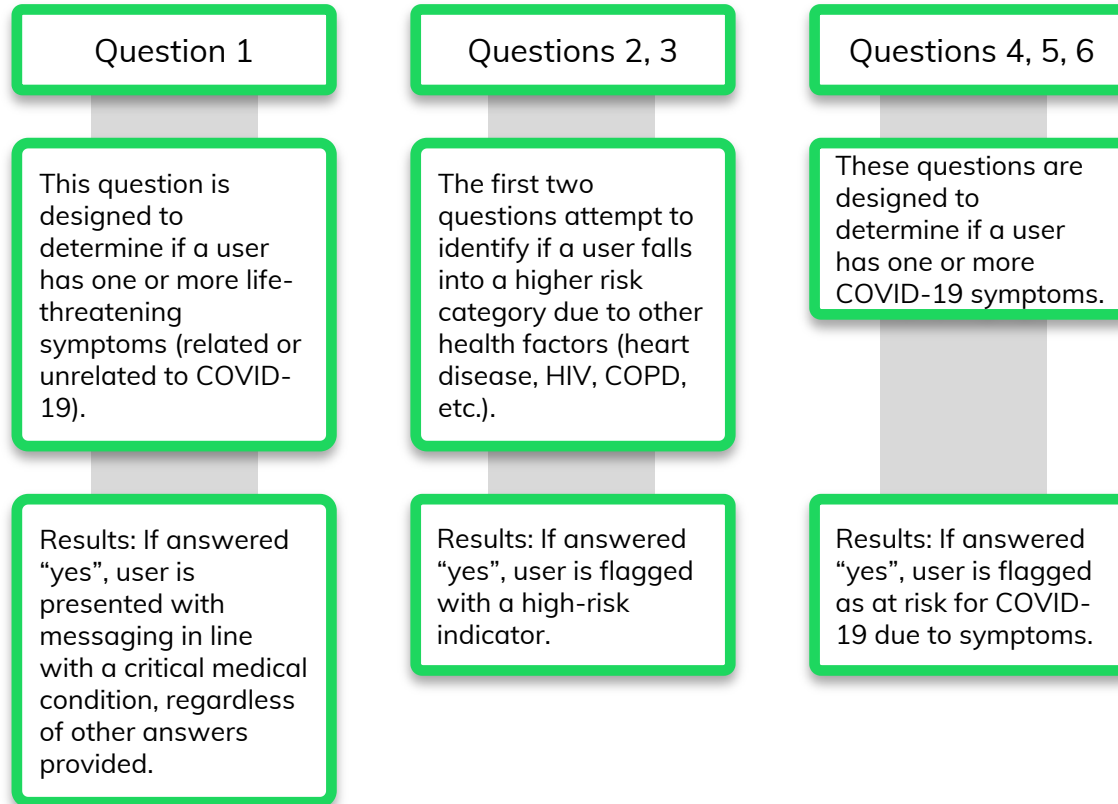
Defined as a user who **has** indicated a potential complication factor (heart disease, HIV, COPD, etc.), **has** indicated one or more COVID-19 symptoms, but has **not** indicated a life-threatening indicator.

5

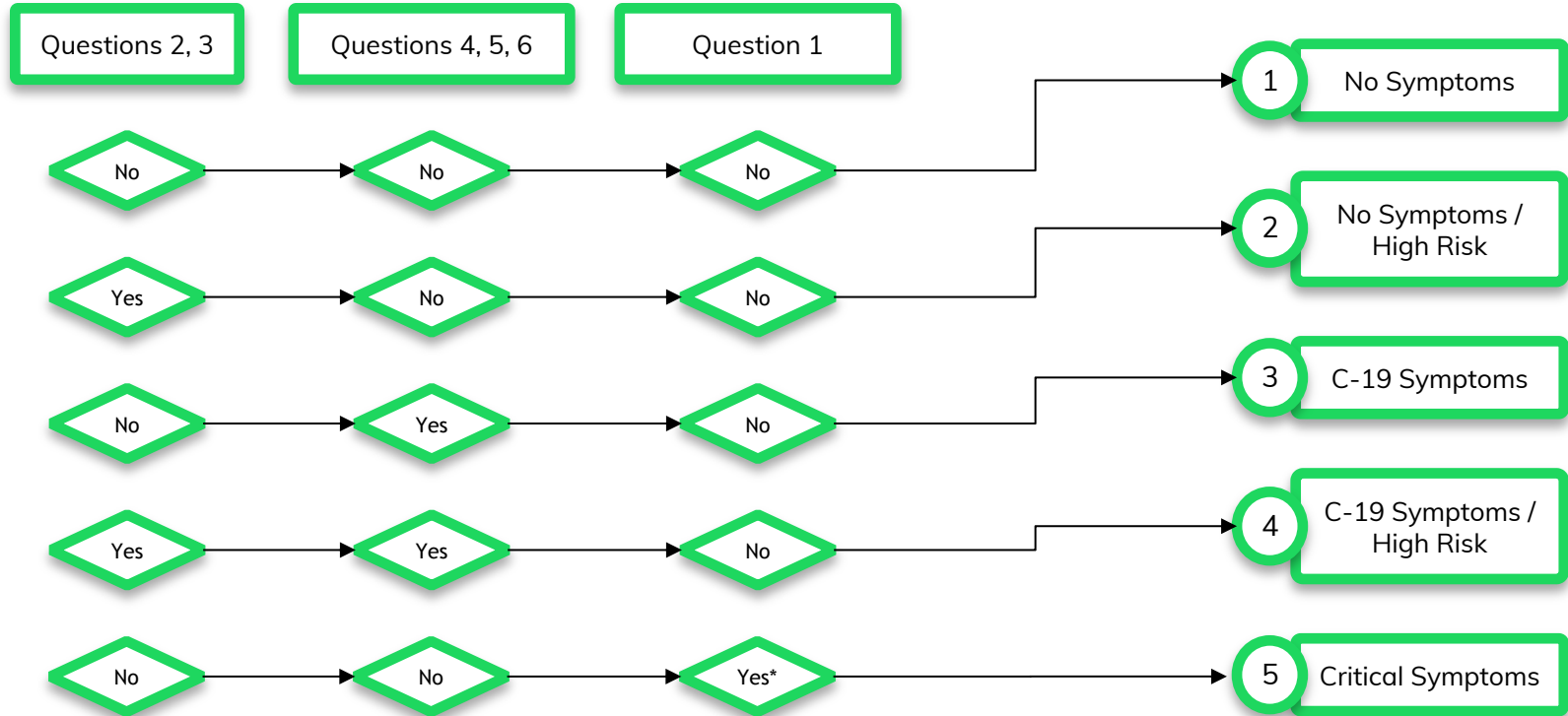
Critical Symptoms

Defined as a user who has indicated a potential life-threatening symptom, either related to COVID-19 or unrelated to COVID-19.

COVID-19 SYMPTOM CHECKER - QUESTION SETS



QUESTIONS



*Scenario overrides any other logic in place

OUTCOMES